



MOSSY OAK PROPERTIES

Greer's Ferry Lake lakeview lot. Memory Lane Estates Lot #3

\$26,995 / 25754.00 Sq. Ft.

About This Property

Memory Lane Estates lot #3 may be the most affordable lakeview and lake access lot along Greer's Ferry Lake! City water and electricity on site. Paved road maintained by city. Every lot has passed a preliminary perc test for a septic system. Even though the lots don't sit right on the waters edge, residents have access to lake by walkway. Imagine the convenience of being able to tie up your boat at the waters edge to allow your family to come aboard, or being able to go ashore to eat your lunch in your own home. Check out this amazing lot before it's gone!



For more information contact listing agents Glenn Dillard (501.827.4011, gdillard@mossyoakproperties.com) or James Dillard (501.207.1770, jdillard@mossyoakproperties.com).

Keywords:

residential, Cleburne County, turkey, whitetail deer, freshwater fishing, bird watching, water sports, road frontage, lake, Greer's Ferry, AR 72067

Property Facts & Features

Main Structure

- No Structure

Other Structures

- N/A

Rights

- N/A

Water Access

- Lake

Fishing

- Freshwater Fishing

Wildlife

- Turkey
- Whitetail

Recreation

- Water Sports
- Bird Watching

Other

- Road Frontage



Mossy Oak Properties Cache River Land & Farm

400 W Race Street
Searcy, AR 72143

Phone: (501) 278-5330

Fax: (501) 278-5229

Link: <http://www.mossyoakproperties.com/land/43066>



MOSSY OAK PROPERTIES



**Mossy Oak Properties Cache River
Land & Farm**

400 W Race Street
Searcy, AR 72143

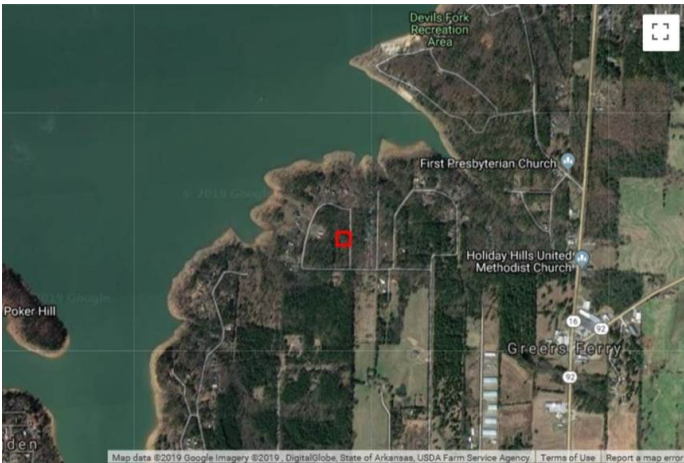
Phone: (501) 278-5330

Fax: (501) 278-5229

Link: <http://www.mossyoakproperties.com/land/43066>



MOSSY OAK PROPERTIES



Mossy Oak Properties Cache River Land & Farm

400 W Race Street
Searcy, AR 72143

Phone: (501) 278-5330

Fax: (501) 278-5229

Link: <http://www.mossyoakproperties.com/land/43066>