



MOSSY OAK PROPERTIES

312 +/- acres of great recreational property with Tombigbee River frontage in Monroe County.

\$599,000 / 312.00+/- Acres

About This Property

This mixed use recreational, timberland 312 acre property located near Amory, MS 38821 in Monroe County is loaded with timber and great hunting. There is also plenty of freshwater fishing along the Tombigbee river. The hunting includes waterfowl, whitetail deer, small game and turkeys. It has a CRP payment of \$3261 per year until 2028.

Contact Phil Barker at 662-295-1344 or pbarker@mossyoakproperties.com to arrange a visit soon.



Property Facts & Features

Main Structure

- No Structure

Other Structures

- N/A

Rights

- N/A

Water Access

- River

Fishing

- Freshwater Fishing

Wildlife

- Small Game
- Waterfowl
- Whitetail

Recreation

- ATV Trail Riding



Mossy Oak Properties Bottomland Real Estate

5741 Hwy 45 Alt South
West Point, MS 39773

Phone: (662) 495-1121

Fax: 0000000

Link: <http://www.mossyoakproperties.com/land/42971>



MOSSY OAK PROPERTIES



Mossy Oak Properties Bottomland Real Estate

5741 Hwy 45 Alt South
West Point, MS 39773

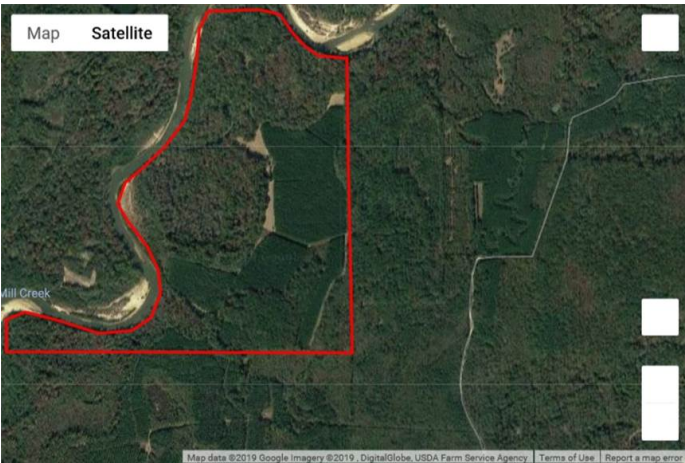
Phone: (662) 495-1121

Fax: 0000000

Link: <http://www.mossyoakproperties.com/land/42971>



MOSSY OAK PROPERTIES



Mossy Oak Properties Bottomland Real Estate

5741 Hwy 45 Alt South
West Point, MS 39773

Phone: (662) 495-1121

Fax: 0000000

Link: <http://www.mossyoakproperties.com/land/42971>