



MOSSY OAK PROPERTIES

245 Acres of Pine, Hardwood and Plenty of Deer Hunting opportunities near Jumpertown, MS!

\$1 / 245.35+/- Acres

About This Property

Your homesite/recreational retreat awaits. Accessible via County Road 550 (Ripley Road) and County Road 558. Deer tracts, scrapes and bedding sites hint at this tract's deer hunting potential. Convenient to Booneville, Corinth and Tupelo, Mississippi. Large adjoining landowners. Please call for current pricing.

Summary

- 198 acres of newly planted Loblolly pine
- 46 acres of hardwood
- Remaining acreage in roads, fields, and utility right-of-ways



For more information or to schedule an appointment to view the property, call Nathan McCollum at (256) 345-0074 or email nmccollum@mossyoakproperties.com. We also have other tracts that are not yet on-line that might fit what you are looking for. Give us a call and we'll help you find something that meets your needs!

Property Facts & Features

Main Structure

- No Structure

Other Structures

- N/A

Rights

- Water

Water Access

- N/A

Fishing

- N/A

Wildlife

- Small Game
- Turkey
- Whitetail

Recreation

- ATV Trail Riding
- Other
- Road Frontage



Mossy Oak Properties Southeast Land & Wildlife, LLC

1229 US-72
Tuscumbia, AL 35674

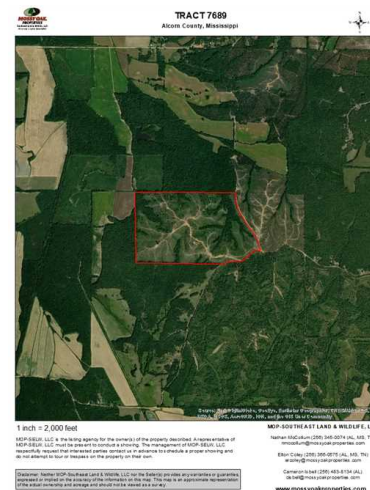
Phone: (256) 383-8901

Fax: (256) 383-8902

Link: <http://www.mossyoakproperties.com/land/40078>



MOSSY OAK PROPERTIES



Mossy Oak Properties Southeast Land & Wildlife, LLC

1229 US-72
Tuscumbia, AL 35674

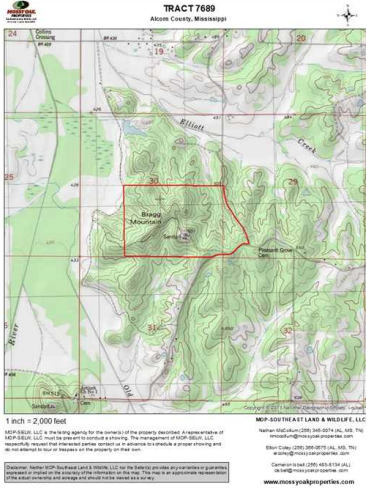
Phone: (256) 383-8901

Fax: (256) 383-8902

Link: <http://www.mossyoakproperties.com/and/40078>



MOSSY OAK PROPERTIES



Mossy Oak Properties Southeast Land & Wildlife, LLC

1229 US-72
Tuscumbia, AL 35674

Phone: (256) 383-8901

Fax: (256) 383-8902

Link: <http://www.mossyoakproperties.com/and/40078>