

TABLE OF METES & BOUNDS
C/L OF 45' PRIVATE ACCESS ROAD & UTILITY R/W

COURSE	BEARING	DISTANCE	COURSE	BEARING	DISTANCE
101	N89°52'00"W	82.47	201	N89°52'00"W	24.16
102	S89°52'00"E	82.47	202	S89°52'00"E	24.16
103	N89°52'00"W	82.47	203	N89°52'00"W	24.16
104	S89°52'00"E	82.47	204	S89°52'00"E	24.16
105	N89°52'00"W	82.47	205	N89°52'00"W	24.16
106	S89°52'00"E	82.47	206	S89°52'00"E	24.16
107	N89°52'00"W	82.47	207	N89°52'00"W	24.16
108	S89°52'00"E	82.47	208	S89°52'00"E	24.16
109	N89°52'00"W	82.47	209	N89°52'00"W	24.16
110	S89°52'00"E	82.47	210	S89°52'00"E	24.16
111	N89°52'00"W	82.47	211	N89°52'00"W	24.16
112	S89°52'00"E	82.47	212	S89°52'00"E	24.16
113	N89°52'00"W	82.47	213	N89°52'00"W	24.16
114	S89°52'00"E	82.47	214	S89°52'00"E	24.16
115	N89°52'00"W	82.47	215	N89°52'00"W	24.16
116	S89°52'00"E	82.47	216	S89°52'00"E	24.16
117	N89°52'00"W	82.47	217	N89°52'00"W	24.16
118	S89°52'00"E	82.47	218	S89°52'00"E	24.16
119	N89°52'00"W	82.47	219	N89°52'00"W	24.16
120	S89°52'00"E	82.47	220	S89°52'00"E	24.16

TABLE OF METES & BOUNDS
SOUTHEAST SIDE OF 30' PRIVATE ACCESS ROAD R/W

COURSE	BEARING	DISTANCE
L-1	S89°52'00"E	24.16
L-2	N89°52'00"W	24.16
L-3	S89°52'00"E	24.16
L-4	N89°52'00"W	24.16

REVISION:	DATE:
TO ADD TRACTS 1-12	12/20/01
TO ADD 20' BLDG SETBACK LINES	02/22/02

EXHIBIT "A"
Yellow Highlighted Lots Included
51.5+/- Acres

- NOTES:
- THIS SURVEY WAS PREPARED FOR THE SOLE BENEFIT OF OUR CLIENT AS NAMED IN THE TITLE OF THIS PLAN, AND IS NOT TO BE USED FOR ANY OTHER PURPOSES WITHOUT THE WRITTEN CONSENT OF THE SURVEYOR.
 - ANY UNDERGROUND UTILITY LOCATIONS SHOWN ON THIS PLAN ARE APPROXIMATE. THE PROPERTY MAY ALSO BE SERVED BY OTHER UNDERGROUND UTILITIES WHICH WERE NOT LOCATED.
 - ALL DISTANCES SHOWN ON THIS SURVEY PLAN ARE HORIZONTAL GROUND DISTANCES UNLESS OTHERWISE NOTED.
 - ALL BRANCH LOCATIONS ARE APPROXIMATE, NOT FIELD LOCATED.
 - ALL LOT LINES, BOUNDARY LINES & RIGHT OF WAY LINES HAVE A 30' BUILDING SETBACK LINE.

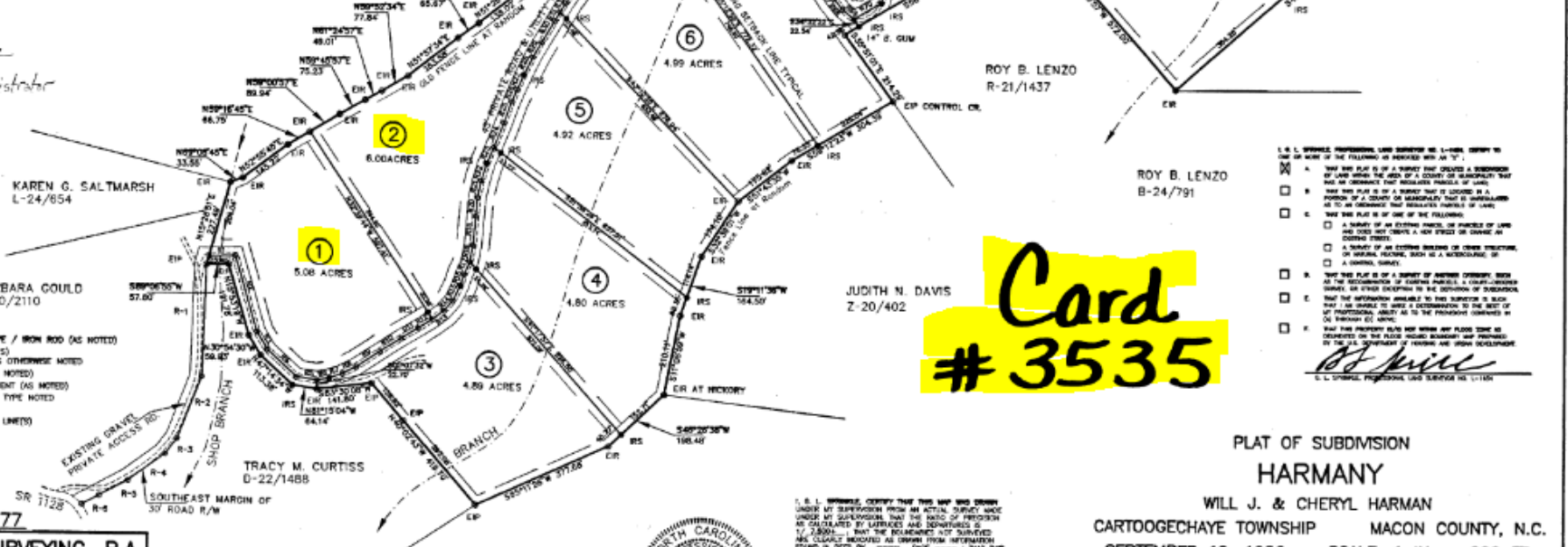
STATE OF NORTH CAROLINA
COUNTY OF MACON

I, HILBERT D. KIESEL, REVIEW OFFICER OF MACON COUNTY, CERTIFY THAT THIS MAP OR PLAN TO WHICH THIS CERTIFICATION IS APPLIED MEETS ALL STATUTORY REQUIREMENTS FOR RECORDATION.

Hilbert D. Kiesel
REVIEW OFFICER
3-11-02
DATE

NORTH CAROLINA, MACON COUNTY
THE FOLLOWSING OF ANNEXED COPIES OF G. L. SPRINKLE P.L.S. OF THE WORKED COUNTY AND STATE ARE DEEMED TO BE CORRECT. PRESENTED FOR REGISTRATION AND RECORDED IN THIS OFFICE ON PLAT NO. 3535 THIS 11th DAY OF SEPTEMBER 1986.

Hilbert D. Kiesel
COUNTY REGISTER OF DEEDS



Card # 3535

- L. & L. SPRINKLE, PROFESSIONAL LAND SURVEYORS, L-1454, CERTIFY THAT THIS MAP OR PLAN TO WHICH THIS CERTIFICATION IS APPLIED MEETS ALL STATUTORY REQUIREMENTS FOR RECORDATION.
- A. THE SURVEY WAS MADE BY ME OR UNDER MY SUPERVISION FROM AN ACTUAL SURVEY MADE UNDER MY SUPERVISION.
 - B. THE SURVEY WAS MADE BY ME OR UNDER MY SUPERVISION FROM AN ACTUAL SURVEY MADE UNDER MY SUPERVISION.
 - C. THE SURVEY WAS MADE BY ME OR UNDER MY SUPERVISION FROM AN ACTUAL SURVEY MADE UNDER MY SUPERVISION.
 - D. THE SURVEY WAS MADE BY ME OR UNDER MY SUPERVISION FROM AN ACTUAL SURVEY MADE UNDER MY SUPERVISION.
 - E. THE SURVEY WAS MADE BY ME OR UNDER MY SUPERVISION FROM AN ACTUAL SURVEY MADE UNDER MY SUPERVISION.
 - F. THE SURVEY WAS MADE BY ME OR UNDER MY SUPERVISION FROM AN ACTUAL SURVEY MADE UNDER MY SUPERVISION.
- Hilbert D. Kiesel*
L. & L. SPRINKLE, PROFESSIONAL LAND SURVEYORS, L-1454

DWG. NO. 3777
SPRINKLE SURVEYING, P.A.
PROFESSIONAL LAND SURVEYORS
484 WEST PALMER STREET
FRANKLIN, NORTH CAROLINA 28734
TEL. 828-524-5867 & 828-524-7994
& 828-389-3048 FAX: 828-524-7994
SURVEY BY MWR/CEJ PLAT BY GLS

REFERENCES:
DEED BK. D-13, PG. 11
DWG. D-7388, BY G. L. SPRINKLE, P.L.S. 08/19/86

JAMES W. DAVIS
1-18/376



I, G. L. SPRINKLE, CERTIFY THAT THIS MAP OR PLAN WAS DRAWN UNDER MY SUPERVISION FROM AN ACTUAL SURVEY MADE UNDER MY SUPERVISION. THAT THE BASIS OF INFORMATION AS CALCULATED BY SURVEYING AND INSTRUMENTS IS TRUE. THAT THE INFORMATION NOT SURVEYED WAS OBTAINED FROM OTHER SOURCES. THAT THIS PLAN AND INSTRUMENTS IN ACCORDANCE WITH G.S. 41-30 AS AMENDED BY G.S. 41-30, OR N.C. STATUTES OF FRANCHISE FOR LAND SURVEYING, PROFESSIONAL NUMBER AND SEAL THIS 11th DAY OF SEPTEMBER 1986.

Hilbert D. Kiesel
PROFESSIONAL LAND SURVEYOR, L-1454

PLAT OF SUBMISSION
HARMANY
WILL J. & CHERYL HARMAN
CARTOOGECHEAYE TOWNSHIP MACON COUNTY, N.C.
SEPTEMBER 19, 1986 SCALE: 1" IN. = 200 FT.

200 0 200 400 600
GRAPHIC SCALE: 1"=200'

NO N.C.C.S. HORIZONTAL CONTROL MONUMENTS FOUND WITHIN 2000 FEET OF SITE